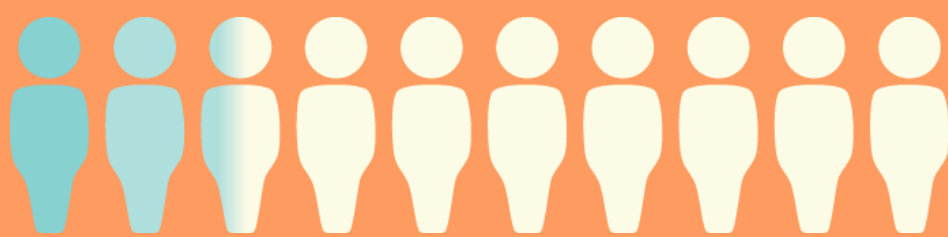


# What You Need to Know About English Learner (EL) Supports for the ACT® Test



English language learners make up 10% of today's US public school enrollment. That is expected to increase to 25% within the next decade.



The goal of providing EL supports is to ensure that the test scores achieved by English learners accurately reflect what they have learned in school.



Test scores earned using EL supports approved in advance by ACT are college reportable.

## English Learner Supports Include:



Extended time testing



Use of an approved word-to-word bilingual dictionary



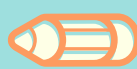
Testing in a familiar environment or small group

### Translated written test directions in the following languages:

Arabic	Korean
Chinese (Simplified)	Russian
Chinese (Traditional)	Somali
French	Spanish
German	Tagalog
Haitian Creole	Vietnamese

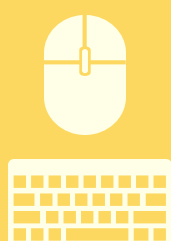
## EL Supports Do Not Include:

- Translated test questions
- Translated verbal instructions and/or use of an interpreter
- Translated DVDs
- Translated reader's scripts
- Printed translations for languages outside of the 12 that are offered
- Use of an electronic translation device



EL supports may be requested on their own or in conjunction with any ACT-approved accommodation.

ACT mainly follows criteria identified in the Every Student Succeeds Act (ESSA) to identify EL status. To be eligible for supports, examinees must supply supporting documentation that proves they meet the criteria.



To request EL supports on the ACT test, examinees must work with a school official to submit a request for supports in the Test Accessibility and Accommodations System (TAA).