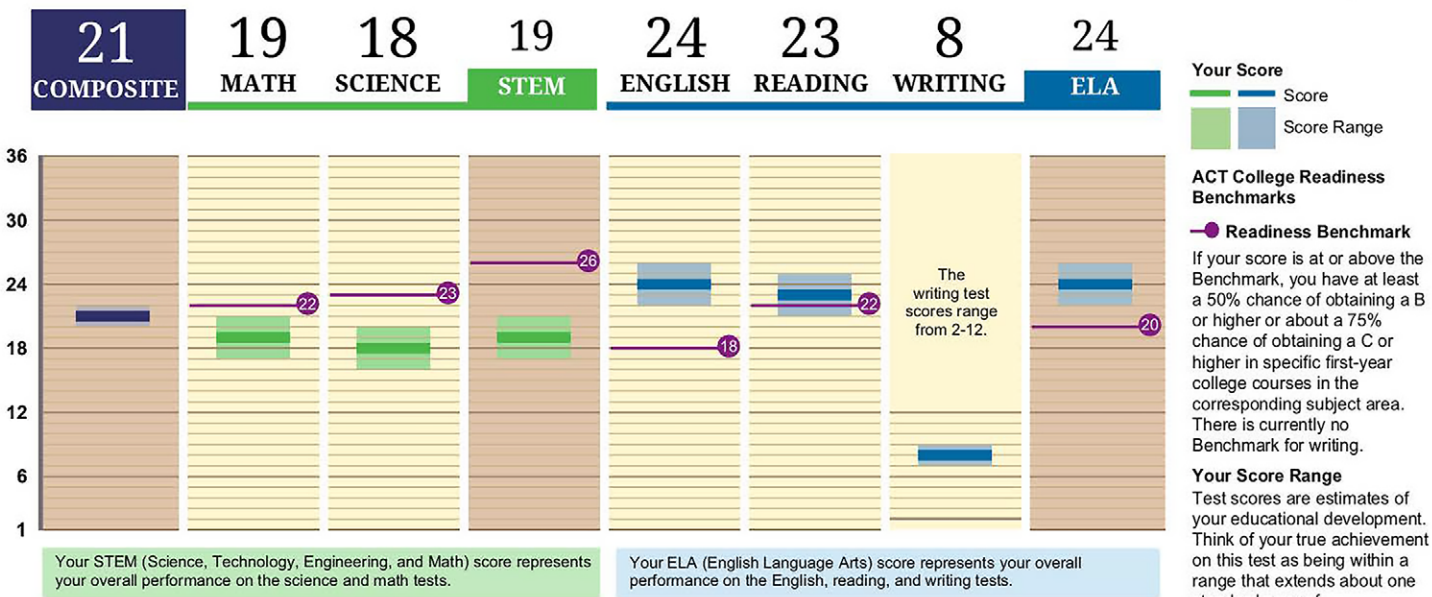


# About the ACT Student Report

Click the  symbol to learn more about using the information in the ACT Student Report



## Student Report



36

30

24

18

12

6

1

Score

Score Range

ACT College Readiness Benchmarks

Readiness Benchmark

If your score is at or above the Benchmark, you have at least a 50% chance of obtaining a B or higher or about a 75% chance of obtaining a C or higher in specific first-year college courses in the corresponding subject area. There is currently no Benchmark for writing.

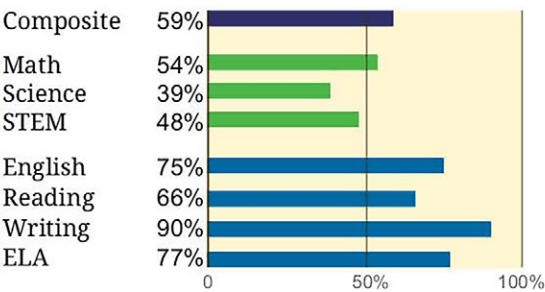
Your Score Range

Test scores are estimates of your educational development. Think of your true achievement on this test as being within a range that extends about one standard error of measurement, or about 1 point for the Composite and writing scores, and 2 points for STEM, ELA, and the other test scores, above and below your score.

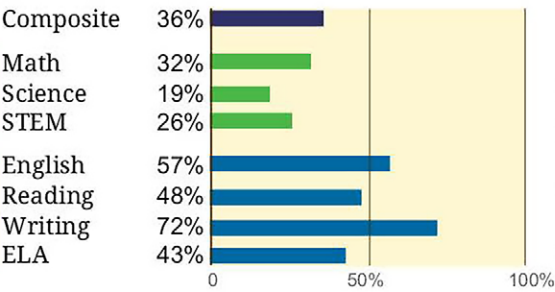
Your STEM (Science, Technology, Engineering, and Math) score represents your overall performance on the science and math tests.

Your ELA (English Language Arts) score represents your overall performance on the English, reading, and writing tests.

### US Rank

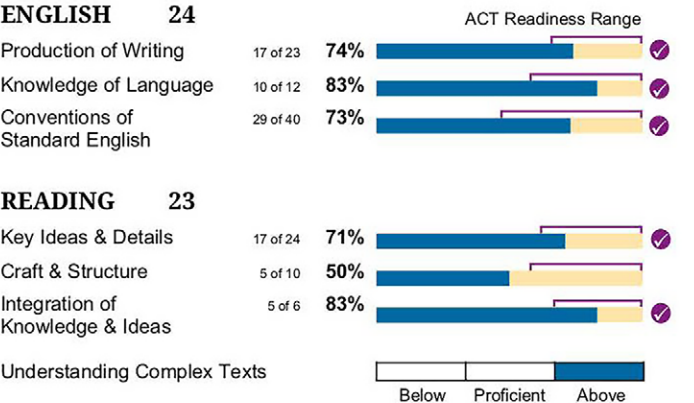
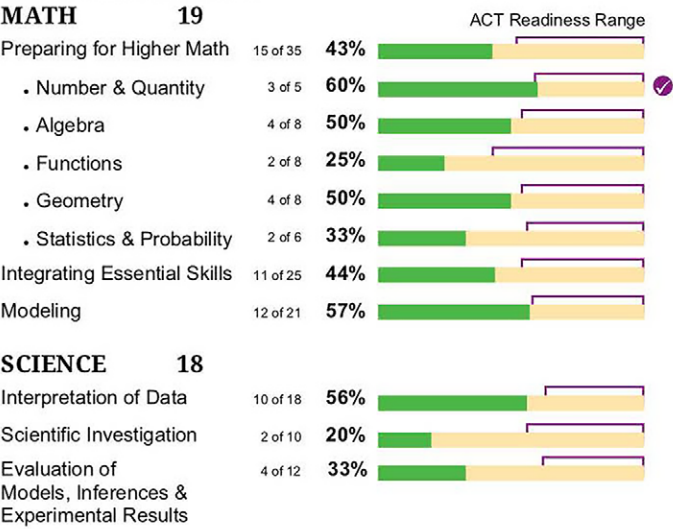


### State Rank

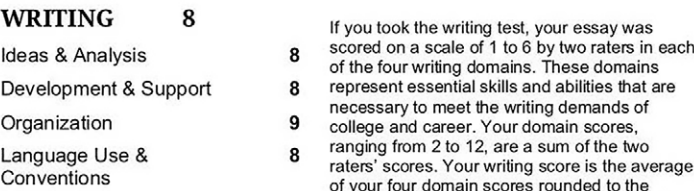


**US & State Rank**  
Your ranks tell you the approximate percentages of recent high school graduates in the US and your state who took the ACT® test and received scores that are the same as or lower than your scores. For example, a rank of 56 for your Composite score means 56% of students earned that Composite score or below.

### Detailed Results



**Understanding Complex Texts:** This indicator lets you know if you are understanding the central meaning of complex texts at a level that is needed to succeed in college courses with high reading demand.



If you took the writing test, your essay was scored on a scale of 1 to 6 by two raters in each of the four writing domains. These domains represent essential skills and abilities that are necessary to meet the writing demands of college and career. Your domain scores, ranging from 2 to 12, are a sum of the two raters' scores. Your writing score is the average of your four domain scores rounded to the nearest whole number. To learn more about your writing score, visit [www.act.org/the-act/writing-scores](http://www.act.org/the-act/writing-scores).

Dashes (-) indicate information was not provided or could not be calculated.

**ACT Composite Score:** ACT Math, Science, English, and Reading test scores and the Composite score range from 1 to 36. For each test, we converted your number of correct answers into a score within that range. Your Composite score is the average of your scores on the four subjects rounded to the nearest whole number. If you left any test completely blank, that score is reported as two dashes and no Composite score is computed.

**ACT Readiness Range:** This range shows where a student who has met the ACT College Readiness Benchmark on this subject test would typically perform.

## Sending Your Scores

A score report (including your photo) was automatically sent to the high school you reported when registration was completed for the test. Your school will use this information for counseling, evaluating the effectiveness of instruction, and planning changes and improvements in the curriculum.

At your direction, your scores from this test date are also being reported to the colleges shown. (Be aware that when you send a report to a college that is part of a school system, the college may share your score with other colleges in that system.) Institutions use your test scores along with high school grades, academic preparation, future plans, and other factors to help identify applicants who can benefit most from their programs. In addition, colleges can use results on the ACT to assist scholarship/loan agencies in identifying qualified candidates, place students in first-year courses, and help students develop an appropriate program of study.

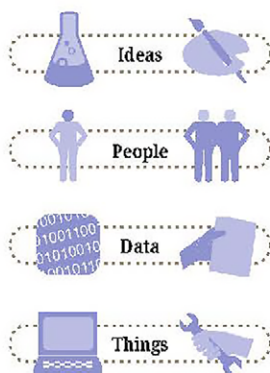
If you entered a college code incorrectly or forgot to include one, don't worry! You can still send scores to other colleges. Visit [www.act.org/the-act/scores](http://www.act.org/the-act/scores) to explore student resources or to order additional score reports.

- 1 AUBURN UNIVERSITY  
[www.auburn.edu](http://www.auburn.edu)
- 2 ADAMS STATE UNIVERSITY  
[www.adams.edu](http://www.adams.edu)
- 3 CAPITAL COMMUNITY COLLEGE  
[www.ccc.commnet.edu](http://www.ccc.commnet.edu)
- 4 MITCHELL COLLEGE  
[www.mitchell.edu](http://www.mitchell.edu)

## College and Career Planning

Not sure what direction you want to take with your education or career? Don't know where to start? Having education and career goals can help you succeed in college and find satisfying work. Setting goals and making plans involves getting answers to the questions that matter most to you.

We are here to help. Visit [www.act.org/collegeplanning](http://www.act.org/collegeplanning) for personalized information on education and career options. There are hundreds of occupations and majors. How do you choose? It helps to have options that are based on what matters to you. For example, all occupations differ in their involvement with four basic work tasks: working with Data, Ideas, People, and Things.



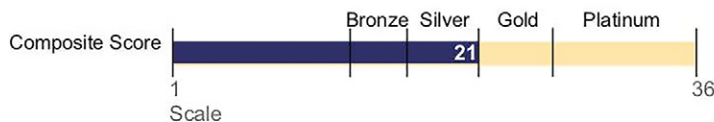
By examining your strengths, interests, and work values in these four areas, ACT can help you discover occupations that fit you best.

Go to [www.act.org/collegeplanning](http://www.act.org/collegeplanning) and find answers to questions you may be asking now:

- How do I get started with college and career planning?
- Which occupations will allow me to use my strengths and do the kinds of work I enjoy?
- Which majors will provide me with a path to achieving my career goals?
- Do the colleges I am considering offer majors I am interested in?

## Progress Toward the ACT National Career Readiness Certificate®

This indicator provides an estimate of the ACT National Career Readiness Certificate (ACT NCRC®) that students with your ACT Composite score are likely to obtain. The ACT NCRC is an assessment-based credential that documents foundational work skills important for job success across industries and occupations. Visit [www.act.org/NCRC-indicator](http://www.act.org/NCRC-indicator) to learn more.



Students with this ACT Composite score are likely to obtain a Silver level NCRC.

## Where Are You Going?

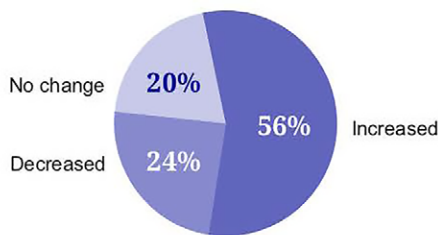
Visit [www.act.org/collegeplanning](http://www.act.org/collegeplanning) to learn more about yourself and find out about careers, majors, and colleges that may be right for you. It's free!

## Retesting with the ACT

Consider retesting if one or more of the following applies to you:

- Do you feel that your scores should be higher than those received?
- Did you have any problems during the tests, like misunderstanding the directions or feeling ill?
- Have you taken more coursework or an intensive review in the areas covered?
- Do you want to apply to a college that requires or recommends the writing test?

## Typical Composite Score on a Retest



Go to [www.act.org/the-act/retaking](http://www.act.org/the-act/retaking) for more information.

### Test Security Hotline

If you have concerns about the security of the tests, please report them at [www.act.ethicspoint.com](http://www.act.ethicspoint.com) or 855.382.2645.